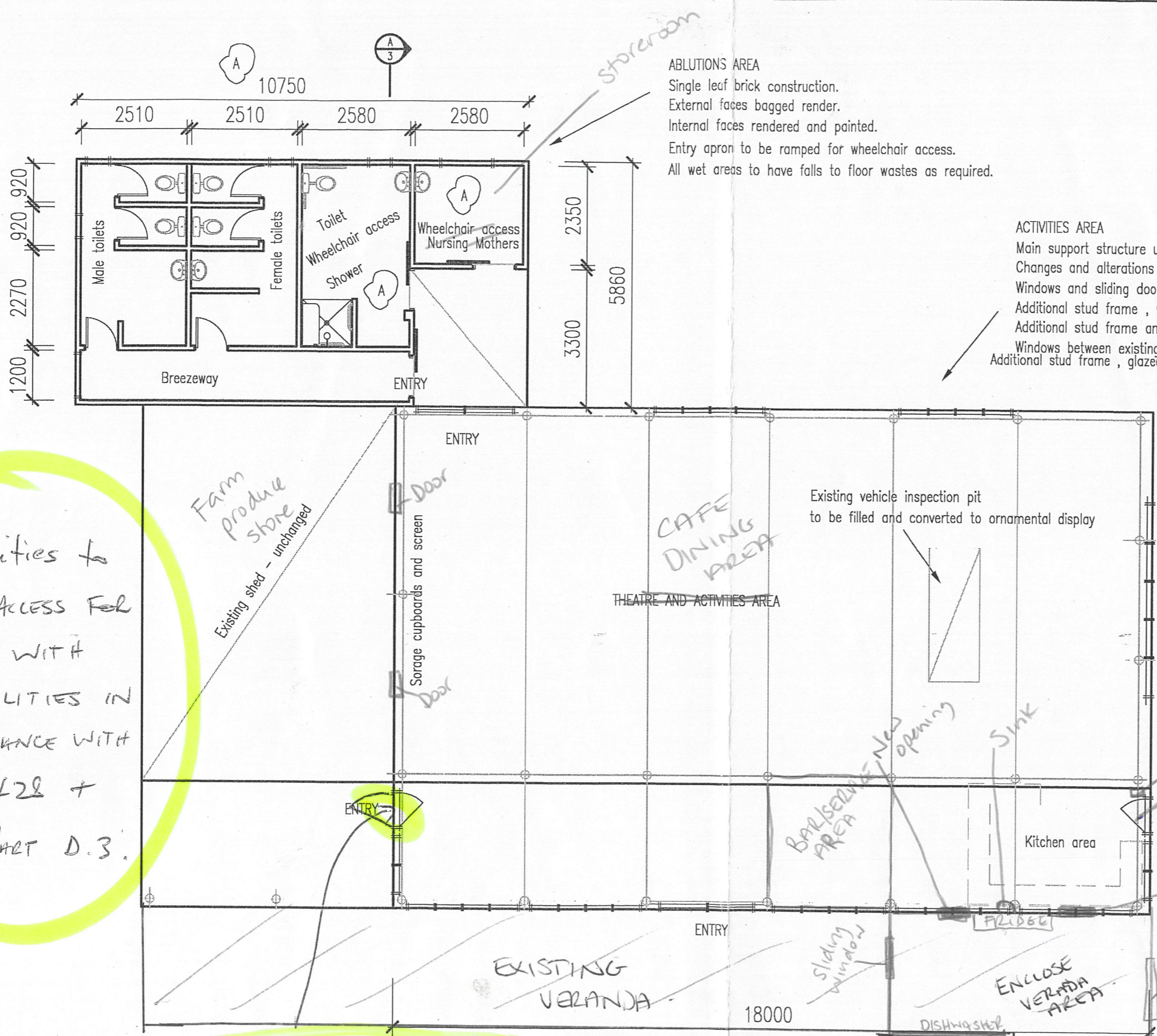


**APPROVED**  
 SUBJECT TO COMPLIANCE WITH  
 THE BUILDING CODE OF  
 AUSTRALIA  
 BUILDING SURVEYOR  
 SHIRE OF NANNUP 7/4/2005  
 D.M.J.

**ABLUTIONS AREA**  
 Single leaf brick construction.  
 External faces bagged render.  
 Internal faces rendered and painted.  
 Entry apron to be ramped for wheelchair access.  
 All wet areas to have falls to floor wastes as required.

**ACTIVITIES AREA**  
 Main support structure unchanged.  
 Changes and alterations are as follows :  
 Windows and sliding door as shown to west elevation.  
 Additional stud frame , windows and sliding doors to East wall.  
 Additional stud frame and windows to south end of existing verandah.  
 Windows between existing girts on existing north wall  
 Additional stud frame , glazed door and windows to north end of existing verandah.



\* Facilities to have access for people with disabilities in accordance with A.S 1428 + BCA Part D.3.

\* Install portable fire extinguishes to suit class 'A' (BCA E1.6)

\* Door to open in the direction of "egress" with approved latch. (See BCA D2.21)

**FLOOR PLAN**

**GENERAL NOTES**

Construct to Relevant Australian Building Codes  
 All dimensions to be checked on site

**PROPOSED BUILDING CONVERSION**  
**LOOSE GOOSE CHALETS**  
 LOT 4027  
 BARRABUP ROAD  
 NANNUP  
 1 OF 4

MAX ARVIDSON - DRAFTSMAN  
 24 WALTER STREET  
 NANNUP 6275  
 PHONE 08 97 560 260

Rev A  
 Service duct removed  
 Wheel chair access areas revised